

Temperature recording

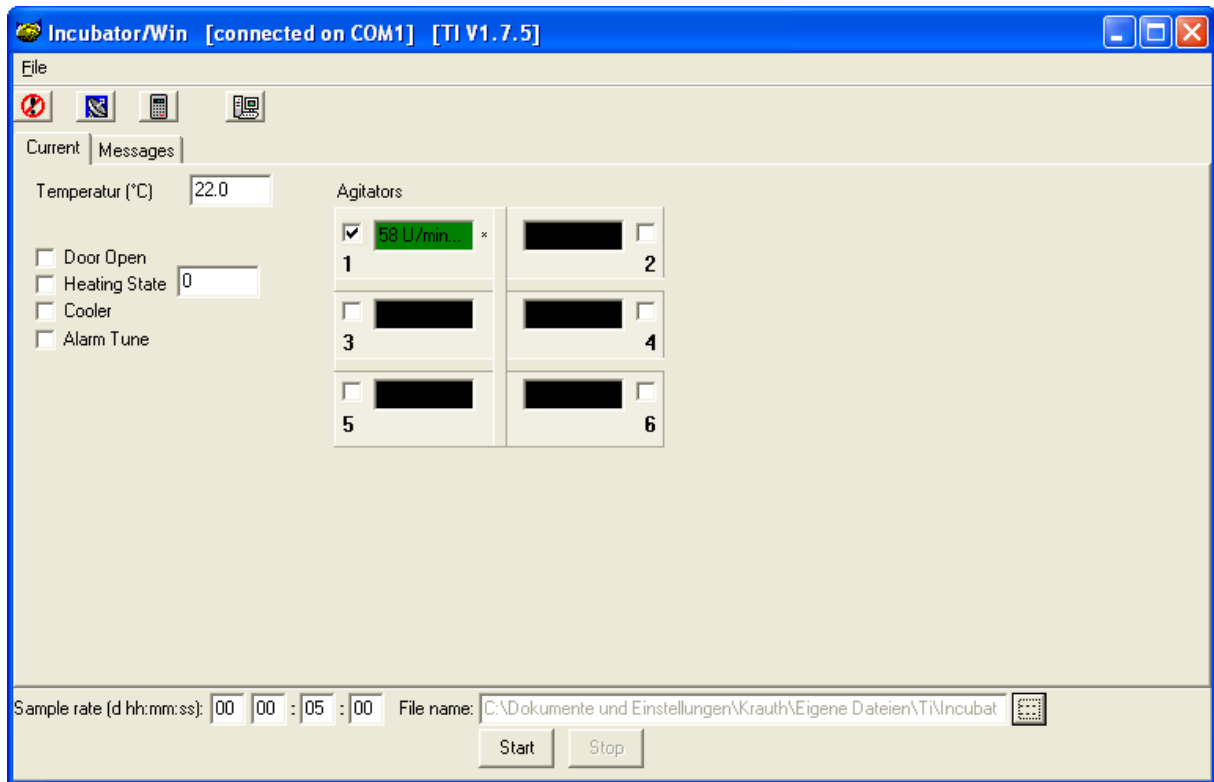
Establish a connection between the computer and the Incubator using the RS 232 interface cable supplied.

The RS 232 plug connection is located on the rear of the Incubator with the designation: PC-RS 232.

Start the IncWin program.

The start takes a few seconds, during this start cycle all the necessary data is read from the Incubator.

The following screen is displayed:



The following statuses are displayed in the Current window:

- Current temperature
 - Active messages such as Door open, Heating State, Cooler, Alarm tune, as well as all connected agitators with their current speeds.
- All active agitators are counted one after the other for 60 seconds and the value is updated.

Start a logging process:

The measurement interval is set in the lower "Sample rate" bar.

The default is 00:00:05:00 (corresponds to 5 min)

The storage location of the log file is suggested in the "File name" field.

The button to the right can be used to select a different storage location and file name.

A "CSV" is suggested as the default format, which can be read in with Excel.

Alternatively, a "txt" file can also be defined here.

The measurement is now started using "Start".

It is stopped manually, there is no automatic end time.

The saved data is stored in the specified file (csv or txt) in the selected memory location. These can now be read into Excel.

The assignment and names of the columns are available in the file "IncWin_LogHeader.xls" and are best copied into the top 2 lines.